

Individual Locking Mailboxes: GORGE



\$190.00 each

STANDARD FEATURES:

- Security of locked mail storage, mail drops to locked area
- No outgoing mail shelf, so it accepts larger items
- Can hold over two weeks average mail delivery
- Dust-proof, shuttered lock prevents corrosion of lock cylinder
- Two keys per lock
- Optional steel post for curbside mounting
- Heavy gauge steel (12 gauge door)
- Mailbox dimensions: 15 ½" H x 10 ¼" W x 21" D
- Incoming mail slot dimensions: 3" H x 10 ¼" W
- Colors: Juniper, Stone, White, Pearl Taupe, Black, Dark Roast and Mallard (shown above)

COLOR OPTIONS:



Juniper



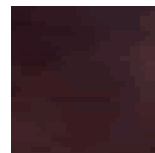
Stone



White



Pearl Taupe



Black



Dark Roast



Mallard